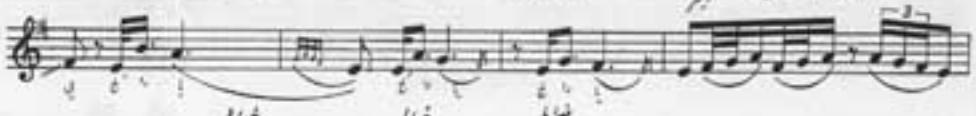
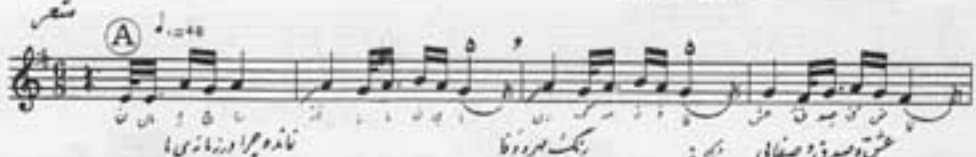
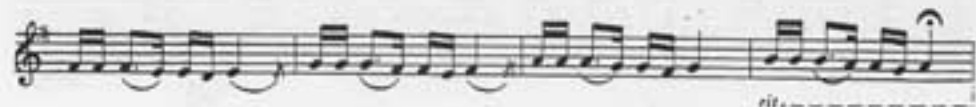
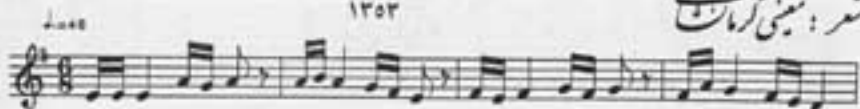
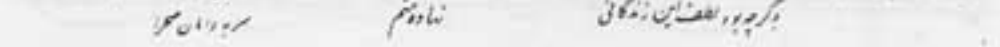
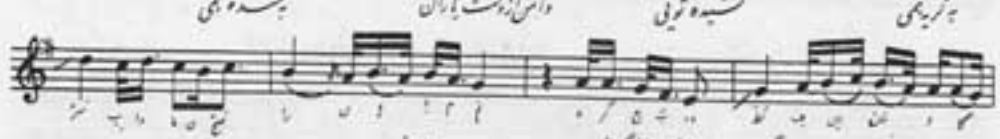
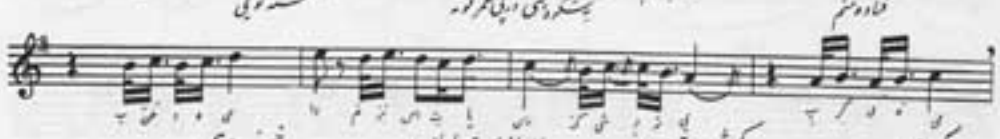
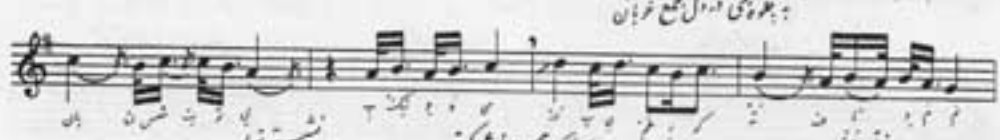
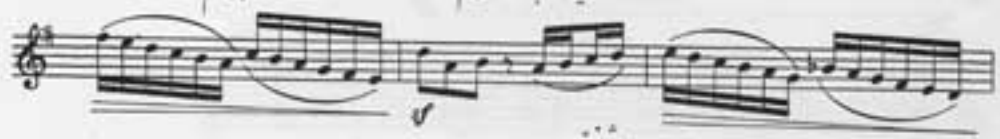
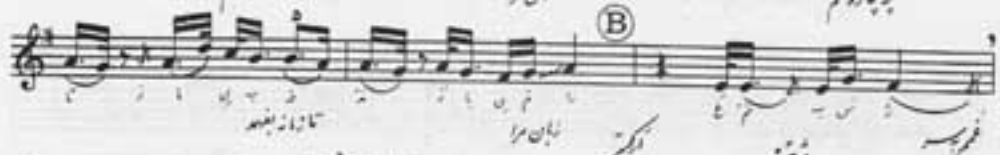
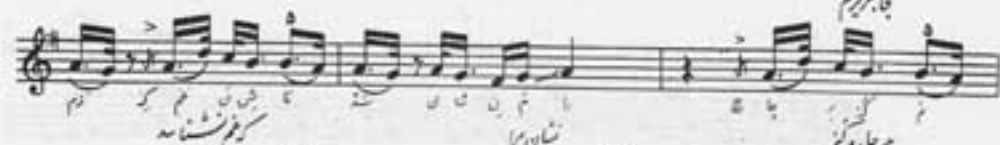


نمانده حسرا - ابراهیم

۱۳۵۲

شعر: یحیی کرمانشاهی





کجا می‌گردم

کرم نشانه

شان را

پروانه کرم

B

تا زود بعد

نشان را

بگذر

بگذر

آشکم در دل

بستب ما کرم

بگذر

بگذر

بگذر

بگذر

بگذر

بگذر

نشته تویی

بگذر

بگذر

بگذر

بگذر

بگذر

بگذر

بگذر

بگذر

بگذر

موسیقی ایرانی

نهی جز شود سحر مرغانی

*mf* *mf* *mf*

(A) (B) Fine

The image shows a musical score for a piece in 2/4 time. It consists of three staves. The top staff is a vocal line with Persian lyrics: "موسیقی ایرانی" and "نهی جز شود سحر مرغانی". The middle staff is a piano accompaniment with dynamic markings of *mf*. The bottom staff is a short melodic phrase ending with a double bar line and the word "Fine".